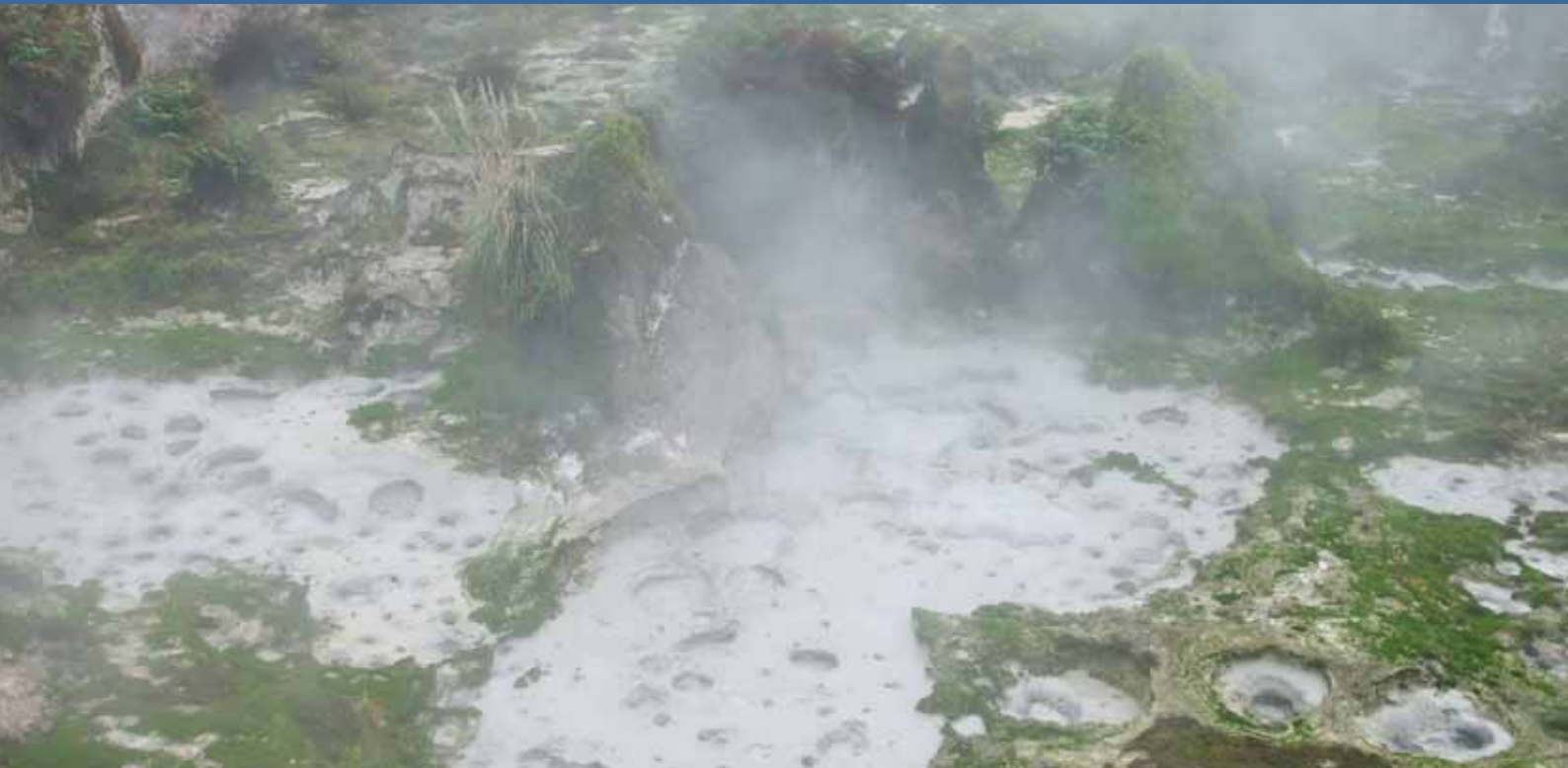




Pests in our Dynamic Landscapes: The pressure is on!



PROGRAMME

NETS2012
18 - 20 July
Wairakei Resort, Taupo



“To preserve and protect New Zealand’s natural resources from the adverse impacts of invasive pests”

Day 1 Wednesday 18 July 2012

- 9.30 Powhiri
- 9.45 Official welcomes - NZ Biosecurity Institute President and National Pest Control Agency Chairperson
- 10.00 Laurie Burdett, Waikato Regional Council
- 10.25 Housekeeping

10.30 Morning tea

- 11.00 Biological Invasions in South Africa and its National Parks
Llewellyn Foxcroft, Programme Manager- Invasion Ecology, Conservation Services, South African National Parks
- 11.45 Building Conservation Intelligence: engaging communities in the work that we do
'Didymo Dave' Cade
- 12.10 Pest control: how do we know if the pressure is working?
Chris Jones, Landcare Research

12.30 Lunch

	WEEDS	INSECTS & DISEASES	VERTEBRATE PESTS
1.30	Field horsetail – from the Cretaceous to the Central Districts <i>Craig Davey, Horizons Regional Council</i>	The Japanese pine sawyer beetle: An unwanted visitor <i>Emmanuel Yamoah, Min for Primary Industries</i>	Assessing the sensitivity of interference based monitoring devices to possum presence <i>Matt Kavermann, Lincoln University</i>
1.50	Old Mans Beard in the Landscape – The Pressure is ON! <i>Kay Griffiths, The Conservation Company</i>	Overview of the New Zealand fruit fly surveillance programme and a review of the current science and strategies used. <i>Rory MacLellan, Min for Primary Industries</i>	Using less 1080 in aerial baiting: cluster-and strip-sowing update <i>Grant Morriss, Landcare Research</i>
2.10	The biological control of tutsan in New Zealand <i>Hugh Gourlay, Landcare Research</i>	Landscaping & termites: the 'Quiet Sleeper' <i>Shaun Bennett, Min for Primary Industries</i>	Non-target monitoring following aerial 1080 possum control in the Hauhungaroa Ranges <i>Grant Morriss, Landcare Research</i>
2.30	Wilding conifer management: A changing landscape. <i>Sherman Smith, Min for Primary Industries</i>	Control Options, Argentine and Darwin ants <i>Melissa Mathieson, NZBI Study Award Recipient</i>	Pindone residues in rabbits <i>Penny Fisher, Landcare Research</i>

2.50 Afternoon tea

	COMMUNITY ENGAGEMENT	AQUATICS & MARINE	VERTEBRATE PESTS
3.20	Powering up weed workshops. <i>Sara Brill, Northland Regional Council</i>	Marine pests – a regional council perspective <i>Gail Townsend, Northland Regional Council</i>	Proving TB Freedom in North Canterbury <i>Mandy Barron, Landcare Research</i>
3.40	Hauraki Gulf Island Biosecurity: An assessment of ferry passenger awareness <i>Lydia Tyrrell, Unitec Institute of Technology</i>	A national HSNO approval for spraying in aquatic environments. <i>James Bevan, Latitude Planning Services Ltd</i>	Lures to monitor and control vertebrate pests at low densities: sex pheromone attractants <i>Janine Duckworth, Landcare Research</i>
4.00	Counteracting pseudoscience, scuttlebutt, and scaremongering in the 1080 debate <i>Alan Dicks, Animal Health Board</i>	Joint-agency response to <i>Undaria pinnatifida</i> in the Fiordland Marine Area - two years on..... <i>Jenny Brunton, Min for Primary Industries, and Tim Riding, Environment Southland</i>	Monitor & Manage the Marsupial Menace: Computer games for decision making <i>Bruce Warburton, Landcare Research</i>
4.20	Kauri dieback; an emerging biosecurity threat to New Zealand's iconic kauri forests <i>Dr Nick Waipara, Auckland Council & Ian Mitchell, DOC</i>	Pouto dune lakes - what makes them special and how are we managing them <i>Jillian Fulcher, Northland Regional Council</i>	Refining Operational Practices for Controlling Rabbits on Agricultural Lands <i>Bruce Warburton, Landcare Research</i>

4.45 New Zealand Biosecurity Institute Annual General Meeting

6.00 Mix 'n' Mingle

Day 2 Thursday 19 July 2012

- 9.00 Problems and solutions to invasive species – the Kruger experience
Llewellyn Foxcroft, Programme Manager- Invasion Ecology, Conservation Services, South African National Parks
- 9.45 Two Minute Biosecurity Gems
- 9.55 From Pets to Pests – Assessing the biosecurity risks within the pet trade
Jaap Knegtman, Ministry for Primary Industries
- 10.15 NETS2012 poster paper presentations

10.30 Morning tea

	WEEDS	AQUATIC	VERTEBRATE PESTS	VECTOR CONTROL
11.00	A herbicide spraying system to control wilding conifers in New Zealand <i>Peter Raal, Dept of Conservation</i>	Biodiversity & Biosecurity – A Hydro-Generator's Perspective <i>Cam Speedy, Genesis Energy</i>	Self-resetting traps for ground based pest control for conservation in New Zealand forests – early results <i>Craig Gillies, Dept of Conservation</i>	Eliminating wild deer in Northland - Lessons learned from a multi-agency response. <i>Don McKenzie, Northland Regional Council</i>
11.20	Demonstrating cause and effect in weed biocontrol: St. John's wort as a case study <i>Ronny Groenteman, Landcare Research</i>	Weed cordons: are they an effective biosecurity tool? <i>Hamish Lass, Bay of Plenty Regional Council</i>	How good are we at trapping possums? - Possum interaction rates with traps. <i>Samantha Brown, Landcare Research</i>	Amendment of the National Pest Management Strategy for Bovine Tuberculosis: Approaches for Eradication of Tuberculosis from Wildlife in New Zealand <i>Matthew Hall, Animal Health Board</i>
11.40	Geothermal habitats in New Zealand and threats to their biodiversity values <i>Sarah Beadel, Wildland Consultants</i>	Lake Taupo Protection Schemes and Farm Nutrient Management <i>Lawrie Donald, Waikato Regional Council</i>	A cheap single capture trap for stoats & rats <i>Grant Morriss, Landcare Research</i>	

12.00 Lunch

FIELDTRIPS

SOUTHERN LAKE TRIP – PESTS AND PEOPLE WITH PASSION

Join this bus trip to southern parts of Taupo to meet locals with a passion for the environment and learn about projects such as south Taupo wetland willow control, Project Tongariro, Pukawa Wildlife Trust and the Blue Duck Trust. Stops include the stunning Lake Rotoaira, Stump Bay and Major Jones Bridge.

Limited to 46 people.

CRUISING THE CRATER (LAKE TAUPO)

Hop on board the Cruise Cat for a trip on Lake Taupo. Sit back and relax while you cruise parts of the lake including Te Moenga Bay, Rangatira Point Maori carvings and Kinloch. You will hear about many of the issues affecting the lake, including catchment management riparian restoration and aquatic weeds.

Limited to 55 people.

BUSTING CLAYS

The annual competition for the claybird shooting trophy takes place again, this year at the Taupo Gun Club. If you would rather kill than cuddle, and you reckon busting clays is your thing, have a go at getting your name on the trophy.

Limited to 20 people and a charge applies.

RANGITAIKI STATION

Come and visit Rangitāiki Station. At 9,694 ha this property is a large and diverse farm wintering over 81,000 stock units, including deer, sheep, beef and dairy grazers. Following intermittent TB issues during the 1990's, the property has been the focus for intensive vector control operations since 2000. In recent years, the Station has worked closely with Bay of Plenty Regional Council on protecting remaining areas of biodiversity value, particularly monoao frost-flats from invading *Pinus contorta*. Other recent pest issues on the property include rooks.

Limited to 46 people.

TAUPO - MORE THAN A GEOTHERMAL WONDERLAND

This trip begins with a stop across the road at Wairakei Golf and Wildlife Sanctuary to look at restoration work and pest control. Then it's on to visit some of Taupo's geothermal sites to see rare and threatened plants, and learn about restoration works and weed control in these hot spots. This trip includes 'hot' stops at Craters of the Moon and Otumuheke Stream.

Limited to 46 people.

6.00 Happy Hour

7.00 Conference Dinner

Day 3 Friday 20 July 2012

WORKSHOPS

9.00

Weeds Database

Richard Bowman

Predicting how and where different weeds spread is an important part of the work we do. Predictive modelling of weed risk is the next step in making this happen. This workshop wants to utilise the expertise and data available in NZ and use to its full potential at a national scale.

Pests & Communities

Craig Morley

How do we get communities interested in conservation issues and values? How do we find ways to engage them to take part in pest control efforts? This workshop looks at practical ways to get individuals and communities on board with the work that we do, and lending a helping hand with tools that are available.

GPS, Photos & Plant ID

Various

Make the most of your GPS and digital camera in this fun interactive workshop around the grounds of the conference venue. Also get some guidance on submitting plant samples for identification or herbarium records.

Monitoring (NPCA)

Bruce Warburton

Which monitoring method to use and for which species of vertebrate pest? This workshop will cover the key points in selecting correct monitoring methods with a focus on the strengths and weaknesses of each method as well as when and where to use them.

Toxins (NPCA)

Steve Hix

This workshop and training session is on the safe use and handling of both PAPP and zinc phosphide. It will cover how to prepare baits for placement in the field and may include some field work in the grounds of the conference venue.

10.30 *Morning tea*

11.00 Workshop roundup

11.30 Closing address TBA

11.45 'Stook' Award, call to conference NETS2013, and conference closing

12.15 *Lunch*

General Information

VENUE and ACCOMODATION

NETS2012 is being held at the Wairakei Resort just outside of Taupo. Special rates have been negotiated for NETS2012 delegates at the resort, and there is a wide range of accommodation available nearby in Taupo. Please make your bookings direct with the resort, and advise them that you are attending the Biosecurity Conference.

REGISTRATIONS

Online registrations are open now at www.biosecurity.org.nz/nets

Full Registration Entitlements

All sessions, lunches, morning and afternoon teas, handbook, field trip, and NETS dinner function on Thursday 19 July. Please note the Mix 'n' Mingle is not included and tickets may be purchased on the registration form.

One-Day Registration Entitlements

Sessions, tea breaks and lunch on day selected. Please note the Mix 'n' Mingle and NETS dinner are not included. Tickets to these social events may be purchased separately on the registration form.

Registration Fees

- Early Bird applies to registrations received on or before 18 June 2012 only
- NZBI members and individual NPCA members will qualify for the reduced member registration rate if 2012 Membership Subscriptions have been received by the their organisation's Treasurer on or before 31 March 2012.
- Non-members who attend NETS will be offered free trial membership until December 2013, unless they have already had a free trial membership previously.

Registration Desk

The registration desk will be open from 6pm to 8pm on Tuesday 17 July at the Wairakei Resort and daily from 8.30am.

Changes, Cancellations and Refunds

Any changes or cancellations of your registration must be notified in writing to carolyn.lewis@xtra.co.nz as soon as possible. A full refund of registration fees, less an administration fee of \$100, will be made for cancellations before 16 July 2012. Refunds or cancellations received after this date will not be possible

unless exceptional circumstances prevail, and refunds are at the discretion of the committee. Registrations may be transferred to another name at no charge.

SPECIAL REQUIREMENTS

If you require vegetarian, diabetic, dairy-free or gluten-free meals, please tick the box on the registration form. If you require a special diet or special assistance, please let us know on your registration form and we will do our best to assist.

NEW MEMBER

If you are new to NZBI or NETS and would like to be allocated a buddy to introduce you to others please tick the box on the registration form.

PRIVACY ACT

The conference handbook will include a list of all attendees and their contact details. Please tick on the registration form if you DO NOT permit your details to be included in the handbook.

TRAVEL INSURANCE

Neither the organising committee of NETS2012, its individual members nor the conference organiser can accept any liability for death, injury, any loss, cost or expense suffered by any person attending NETS2012. Delegates are strongly advised to take out travel insurance to cover medical expenses, accidents, loss, damage, etc.

DISCLAIMER

The organising committee of NETS2012 reserves the right to modify the programme as needed, and is not able to guarantee that any particular person will appear as a speaker or any particular workshop or fieldtrip will be run, should circumstances require a cancellation or change to the programme.

UPDATES

Please check the website www.biosecurity.org.nz/nets regularly for updates.

CORRESPONDENCE and QUESTIONS

Carolyn Lewis, Conference Organiser

Ph: (0274) 434 431 or carolyn.lewis@xtra.co.nz